



**+** OUR SUPERIOR  
QUALITY PLANTS

**=** A TOOL TO FACE  
CLIMATIC CHALLENGES

32 varieties of strawberries

18 varieties of raspberries

20 varieties of blueberries

4 varieties of blackberries

6 varieties of cherries

10 varieties of haskaps

2 varieties of asparagus

2 varieties of kiwis

2 varieties of rhubarb

4 varieties of currants and gooseberries



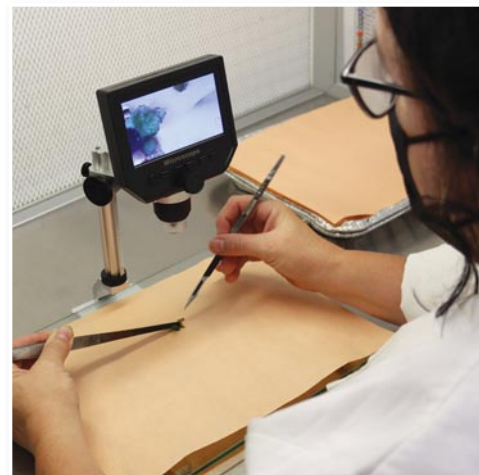


# Technology, control and tracking are at the heart of our fruit plant propagation

## 1 **Control**

### ✓ **STARTING ON SOLID GROUNDS**

- Double sampling of viruses (SMYEV and SMOV) before digging.
- Isolation of foundation and elite stock blocks.
- Clonal verification and exhaustive viral eradication to begin.
- Thresholds levels under North American limits.
- A control of insects vectors, efficient and without mercy.



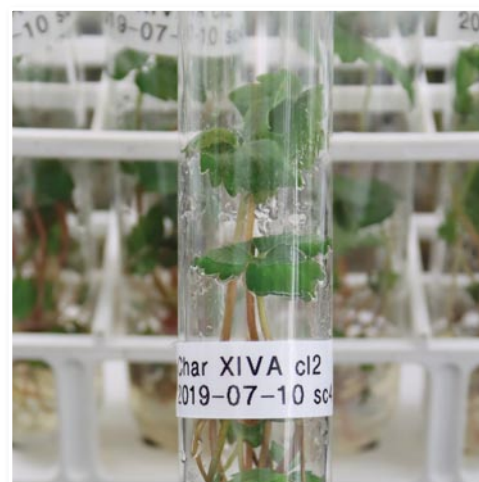
## 2 **Production**

### ✓ **CROP ROTATION :**

4 years of crop rotations and soil disinfection before planting.

### ✓ **GPS TECHNOLOGY :**

Better plant growth, better weed insects and foliar diseases control.



**CUT DATE**  
FOR ORDERS  
PLUG PLANTS :  
**APRIL 15 2022**  
FOR AN AUGUST 2022  
PLANTATION



### **WHY PLANT MINI TRAYS IN AUGUST ?**

High-end product, the mini tray can be used for very early harvest, increased fruit size and outstanding fruit quality.





## RESEARCH EFFORTS DELIVER !

HERE IS OUR NEW BOX  
MADE SPECIALLY FOR PRECOOLING OF ALL PLANT TYPES,  
MADE SPECIALLY TO IMPROVE PLANT STORAGE LONGEVITY  
AND PLANT ESTABLISHMENT.

3

### Conditioning

#### ✓ STRAWBERRY PLANTS PRE-COOLING !

*Feasible and worth it:*

Better shelf life of fresh dug plants  
and frigo plants.



4

### Tracking

✓ **FROM THE FIRST STEP** of propagation all  
the way to the boxing, through digging and  
grading, your plants are tracked by a specific  
code on the box.



ONLINE  
INTERACTIVE  
ORDER  
FORM

**lareault.com**

PRODUCTION LAREAULT ONLINE  
TRANSACTIONAL WEBSITE.

### A COMPLETE SUCCESS !

DESIGNED AND BUILT FOR OUR CLIENTS, IT HELPS  
AND GUIDES YOU INTO THROUGH YOUR CULTURAL  
SMALL FRUIT PROJECTS, OR ENABLE THE  
AWAKENING OF THE URBAN FARMER IN YOU. YOU  
WILL FIND PRODUCT INFO, CURRENT AND OLDER  
VERSIONS OF CATALOGS AND THE FREQUENTLY ASK  
QUESTIONS SECTION. WE VALUE YOUR COMMENTS.



BETTER PLANTING  
TECHNIQUES WITH OUR  
STICKING LINE,  
INCREASED UNIFORMITY.



**THESE THREE VARIETIES WON'T GO UNNOTICED.** AAC-Audrey perfect on all points, AAC-Evelyn and AAC-Kate firmness and size will impress you.

## AAC-AUDREY

Unequalled fruit qualities. Sweet and flavorful. Firm, shiny and attractive.

### Growth and vegetation

Vigorous growth with strong cup shaped leaves. Good running, ease of harvest.

### Harvest and Yield

On a two-year trials, yields were superior when compared to Jewel. Early harvest.

### Berries

Uniform and large fruit size, bright red, firm but very flavorful. Cull rates very low during comparative tests.

EARLY, WITH A HIGHER YIELD  
COMPARED TO JEWEL OVER A  
TWO-YEAR HARVEST.



## AAC-EVELYN

 Very, very large fruits. Shiny and elongated berries.

### Growth and vegetation

Erect growth with deep green foliage. Good running. Good tolerance to foliar diseases.

### Harvest and yield

Mid season to late harvest, Yield similar to Jewel.

### Berries

Very, very large fruits size. Shiny, flavorful and elongated berries.



ONLINE  
INTERACTIVE  
ORDER  
FORM

[lareault.com](http://lareault.com)

## AAC-KATE

### Growth and vegetation

Erect growth with deep green foliage. Good running. Good tolerance to foliar diseases.

### Harvest and yield

Mid season to late harvest, Yield similar to Jewel.

### Berries

Very, very large fruits size. Shiny, flavorful and elongated berries.

**MOST POPULAR VARIETIES :** Among our large cultivar selections, you will build a spread harvest on those reliable one's. AAC-Lila to start with high quality berries, Jewel will dominate the mid-season.

UNANIMOUSLY CONFIRMED  
IN PROFESSIONAL CHOICE, MORE  
WINTER HARDY THAN JEWEL ...  
ALWAYS RELIABLE IN QUALITY.

## AAC-LILA

**EXCLUSIVITY**

### Growth and vegetation

Vigorous plant with an open growth, making picking easy.

### Harvest and yield

Predicted yield similar to Jewel. Increased picking speed.

### Berries

Bright red, firm and of large size. Excellent taste.



## JEWEL

### Harvest and yield

Highly productive mid-season harvest, industry reference standard.

### Berries

Very attractive bright shiny red fruits. Very good size and firmness.



**HEIRLOOM CULTIVARS :** Hardiness and flavors of yesterdays! Veestar for harvest opening, a hint of wild berries. Kent for a plentiful mid-season and Bounty for a sweet finish! Happy harvesting!



## KENT

### Growth and vegetation

Dense and spread growth with a dark green foliage. Excellent vigor and runnering.



### Harvest and yields

A standard in its day's for a mid-season. Very productive and hardy.

### Berries

Bright red and firm, very good size. Good flavor.



## VEESTAR

### Growth and vegetation

Spread and dense foliage with small dark green leaves. Very hardy.

### Harvest and yields

Very early harvest can be forced with a row cover, excellent for U-Pick.

## BOUNTY

### Growth and vegetation

Dark green foliage with and upright growth. Vigorous and good runnering. Susceptible to common leaf spot.

### Harvest and yields

Late-season harvest with good yield for U-pick

### Berries

Good size fruits of dark red color and of excellent flavor. Medium firmness.



### Berries

Shiny red fruit of medium size, sweet and firm.



[lareault.com](http://lareault.com)

**MOST POPULAR VARIETIES:** AC-ST Laurent will maintain berry quality until Malwina bears high quality berries. 5 weeks of non-stop top quality fruits.

A TASTY VARIETY WITH EXCELLENT FRUIT QUALITY, THAT WILL STRETCH THE SALE SEASON FOR THE U-PICK AND THE FARM STAND.

## AC-ST-LAURENT

### Growth and vegetation

Vigorous growth with a low spreading habit and good runnering. Foliage is medium green with excellent resistance to common foliar diseases.

### Harvest and yield

Excellent yield, a long harvest starting a week after Jewel.

### Berries

Bright red, firm of large size.



## MALWINA

one week after Summer Evening.

### Berries

Deep red, firm and tasty. Large berries that ripen underneath the canopy.



## Day-neutral **STRAWBERRIES**

### **FLORIDA — BEAUTY**

*Heat wave resistant!*

#### **Growth and vegetation**

Compact growth with open foliage and good runner. Resistant to warm weather and heavy feeder.

#### **Harvest and Yield**

Earliness and yield similar to Seascape. Will go on with fruit set even in warm weather. Nonstop flowering.

#### **Berries**

Large, round to conical fruit, shiny, firm and pleasant taste. Excellent shelf life.

### **MURANO**

*Flavor, firmness and productivity*

#### **Growth and vegetation**

Dense and dark foliage with upright growth. Good runner with good diseases resistance.

#### **Harvest and Yield**

Early harvest, similar to seascape. Will exhibit continuous and profuse flowering with excellent yield.

#### **Berries**

Flavorful and very firm fruit. Conical shape with bright red color and tough skin.

### **SHANNON M. KENT**

*Size, ease of harvest and yield*

#### **Growth and vegetation**

Dark green foliage with good runner and compact growth. The open canopy leaves access and facilitate fruit picking.

#### **Harvest and Yield**

Early harvest with superior yield compared to Seascape and Albion.

#### **Berries**

Very large fruit, of round shape and very firm. Very good taste and improve shelf life.



## June bearing **STRAWBERRIES**

### **AAC-GÉNÉREUSE**

#### **Growth and vegetation**

Hardy and disease resistant foliage. Vigorous growth and runner.

#### **Harvest and yield**

High yield.

#### **Berries**

Conical to globe shape fruit of medium size. Blood red type with a light shine similar to Kent.

### **DICKENS**

#### **Growth and vegetation**

Medium green foliage with an upright growth. Good vigor and runner. Resistance to foliar diseases.

#### **Harvest and yield**

Mid-season to late harvest. Follows Jewel in the production dates with a similar yield.

#### **Berries**

A short conical fruit with good size. Flavorful, bright red and very firm berries.



**AN IMPROVED CAVENDISH**  
Better firmness Better uniformity  
Better disease resistance



Photo credit : Agriculture and Agri-Food Canada

**EARLY VARIETIES**



### **LAUREL**

#### **Growth and vegetation**

Vigorous growth and good runner. Tolerance to leaf diseases.

#### **Harvest and yield**

Mid season's harvest, with good yield, an improved Cavendish.

#### **Berries**

Good size, firmer and more uniform than Cavendish. Deep red berries of very good quality.

### **MAGNUM**

#### **Growth and vegetation**

Dark green foliage with upright growth, medium vigor and runner. Good resistance to foliar diseases.

#### **Harvest and yield**

Early harvest spreading into the mid-season. Good yield.

#### **Berries**

Firm and large bright red fruit with very good size but also very sweet.





## **ALBION**

### **Growth and vegetation**

Strong and upright growth habit with a good runner emission in June. Spider mites susceptible, but good tolerance to powdery mildew. Will benefit from a good winter protection for a second year crop.

### **Harvest and yield**

Fruit set slower than Seascape but better heat tolerance. Ideal for southern Québec

and Ontario. Excellent companion with Seascape for size stability in a Mini-tray production.

### **Berries**

Bright shiny red color that darkens upon ripening. Will sustain rain damage with very good firmness. Excellent taste when picked ripe.



## **AAC-DYNAMIK** *25% higher yield than Seascape. Fruit quality comparable to Albion.*

### **Growth and vegetation**

Compact growth and low running. Low susceptibility to foliar diseases and glossy foliage.

### **Harvest and yield**

As early as Seascape with 25 to 30% more yield.

### **Berries**

Conical fruits, shiny red, firm and juicy tough skin.



## **CHARLOTTE**

### **A NORTH AMERICAN EXCLUSIVITY FROM PRODUCTION LAREAULT.**

Charlotte's flavor is exceptionally outstanding, known as a European trademark for years now, Charlotte has a unanimous aromatic and perfumed taste. Charlotte is a premium commercial strawberry. Charlotte is a Top of the line commercial strawberry chosen by renown Chefs.

### **Growth and vegetation**

Large and vegetative foliage with medium running. Good tolerance to powdery mildew and spider mites. Highly adapted to Canadian winters.

### **Harvest and yield**

Yield comparable to Albion in the first year but superior on a second year. Second flush from mini-tray is early and abundant. Will perform better under low fertilization regimes.

### **Berries**

Average fruit size from 17 to 20 gr. Blood red typical fruit color. Unique wild strawberry aroma developed by a low acidity content.

### **Growth and vegetation**

Vegetative growth of medium vigor. Will benefit from a good winter protection for a second year crop. Powdery mildew and spider mite susceptibility.

## **SEASCAPE**

### **Harvest and yield**

Day neutral reference for harvest curve in Eastern Canada. Bear an early crop of large size berries. Size will drop rapidly. Possible gap between second flush in mid-July.

### **Berries**

Berries are firm and glossy with a balance taste between acid and sugar. Render an excellent taste late in the summer when nights are cooling down. Good shelf life with a tendency to darken. Will be damaged by rain.



Day-neutral **STRAWBERRY** pink flowers

## **INOVA-ROSA**

WE INVITE YOU TO  
CONSULT OUR WEB SITE  
FOR ADDITIONAL  
INFORMATION.





Available

**STRAWBERRY** VARIETY LINES

Period	Variety	Origin	Hardiness	Productivity	Size	Flavor	Firmness	Appreciation	TYPE OF MARKET				TYPE OF PLANTS	
									Whole-sale	Retail	Pick-your-own	Process.	Bare root	Mini-Tray
<b>EARLY</b>	<b>Annapolis</b>	NS	••••	••••	•••	•••	•••	Red stele resistant		■	■		■	
	<b>Bio Galletta</b>	US	••••	••••	•••••	••••	••••	Early and large	■	■	■		■	
	<b>AAC-Audrey</b>	NS	••••	•••••	••••	•••••	••••	A must in your mix	■	■	■	■	■	■
	<b>AAC-Lila</b>	NS	•••••	••••	••••	••••	••••	Ease of picking	■	■	■		■	■
	<b>Magnum</b>	FR	•••••	••••	••••	•••••	••••	Very Sweet	■	■	■		■	■
	<b>Bio Red Merlin**</b>	UK	••••	•••	••••	••••	••••	Early for high density planting	■	■	■		■	■
	<b>Veestar</b>	CDN	••••	••••	•••	•••••	•••	Earliness and hardiness		■	■		■	
<b>MID-SEASON</b>	<b>Cabot**</b>	NS	•••	••••	•••••	••	••	Moderate runner production		■	■		■	
	<b>Bio Cavendish**</b>	NS	•••	•••	••••	•••	•••	Good for fresh market		■	■		■	
	<b>Dickens</b>	US	••••	••••	••••	•••	••••	For trial	■	■	■		■	
	<b>AAC-Généreuse**</b>	QC	•••••	•••••	••••	••••	••••	High yielding	■	■	■		■	
	<b>Glooscap</b>	US	••••	••••	•••	••••	••	Short shelf life		■	■		■	
	<b>Jewel</b>	US	•••	•••	••••	••••	••••	#1 selling variety	■	■	■		■	■
	<b>AAC-Evelyn</b>	NS	••••	••••	•••••	•••••	••••	Excellent firmness	■	■	■		■	
	<b>Kent</b>	NS	••••	••••	••••	••••	•••	Very susceptible to Sinbar		■	■		■	
	<b>Laurel</b>	NS	••••	••••	••••	••••	••••	An improved Cavendish		■	■		■	
	<b>AC* Saint-Pierre**</b>	QC	••••	•••	••••	•••	••••	Good shelf life	■	■			■	
<b>LATE</b>	<b>Bounty</b>	US	••••	•••	•••	•••••	••	Short shelf life		■	■	■	■	
	<b>AAC-Kate*</b>	NS	••••	••••	•••••	••••	•••••	For trial	■	■	■		■	
	<b>Malwina</b>	DE	••••	••••	••••	••••	••••	The latest	■	■	■		■	
	<b>Bio AC* St-Laurent</b>	QC	••••	••••	••••	••••	••••	Excellent shelf life	■	■	■		■	
	<b>Summer Evening</b>	ON	••••	••••	••••	•••	•••	Firm and productive	■	■	■		■	
	<b>Valley Sunset</b>	NS	•••	•••	••••	•••	•••	Good for late season		■	■		■	
<b>DAY NEUTRAL</b>	<b>Albion**</b>	US	•••	•••	••••	••••	••••	Complement to Seascape	■	■			■	■
	<b>Bio Charlotte**</b>	FR	••••	•••	••••	•••••	••••	Exceptional aromatic flavor	■	■	■	■	■	■
	<b>AAC-Dynamik*</b>	QC	••••	•••••	••••	•••	•••••	Very high yield	■	■	■		■	■
	<b>Florida — Beauty</b>	US	•••••	•••••	••••	•••••	••••	Excellent Shelf life	■	■			■	■
	<b>Mara des bois**</b>	FR	••••	•••	•••	•••••	•••	Wild strawberry flavor		■		■	■	
	<b>Murano</b>	IT	••••	•••••	••••	•••••	••••	Falvorful	■	■			■	■
	<b>Shannon M. Kent</b>	US	•••	••••	••••	•••	••••	Larger fruit size	■	■			■	
	<b>Seascape**</b>	US	•••	••••	••••	•••	••••	#1 Day neutral	■	■			■	■
<b>PINK FLOWERS</b>	<b>Inova-Rosa</b>	EU	•••••	••••	•••	••••	••••	Spectacular flowering Good in rock gardens					■	



Varieties best adapted to organic growing

Excellent ••••• Very Good •••• Good ••• Average •• Poor •

\*«AC» is an official trademark used accordingly to a license granted by Agriculture and Agrifood Canada. \*\* Protected variety (Plant breeders right certificate granted)

We chose to list varieties in alphabetical order within harvest group, instead of listing them by dates of harvest debut. Harvest dates and debut may change with soil types, localities and climatic variations of each season.





# STRAWBERRIES

## FOR INTERNATIONAL MARKET

CAMINO REAL • CHANDLER • FL-BEAUTY  
FL-BRILLIANCE • FLORIDA RADIANCE  
FL-SENSATION • STRAWBERRY FESTIVAL



### Frigo plant

High density plantings on annual hills systems for short varieties and day neutrals.

### Tray plant

Greenhouse production with forced heating cultivations..



### Green top

Conventional plantings on matted row system.



### Plugs

Early production on annual hills systems. Short day and day neutral varieties as well as an types of tunnel productions on soil or hydroponics.



## CUT DATE

FOR ORDERS  
PLUG PLANTS:

**APRIL 15 2022**

FOR AN AUGUST  
2022 PLANTATION



**HIGH SUBSTRATE  
VOLUME  
PLUGS**

ONLINE  
INTERACTIVE  
ORDER  
FORM

**lareault.com**



## Summer fruiting red **RASPBERRIES**

### **AAC-EDEN**

#### **Growth and vegetation**

Vigorous plant. Canes free of spines. Excellent hardiness.

#### **Harvest and yield**

Predicted yield higher than Nova.  
Harvest dates similar or before Nova.

**FAST  
PICKING**

**VERY  
GOOD  
SHELF LIFE**

**FREE  
OF  
SPINES**

#### **Berries**

Large size, firm and easy to pick. Light red color, silky, not shiny. Excellent taste.



### **NOVA**

#### **Growth and vegetation**

Vigorous stand with high suckering. Canes are very tall with a few spines, avoid heavy soils.

#### **Harvest and yield**

Very good productivity and hardiness. Harvest begins in mid-season, with a good tolerance to late leaf rust.

#### **Berries**

Large size and good flavor berries. Medium red color with good firmness. Will bear fruits occasionally in exceptionally warm falls.



### **PRÉLUDE** *An early cropper that stand out!*

#### **Growth and vegetation**

Long vigorous and resistant canes, good hardiness.

#### **Harvest and yield**

Excellent productivity, early harvest with some fall bearing fruits, if conditions are favorable, a

production bonus!

#### **Berries**

Good size firm fruit with tight drupeoles. Flavorful and firm berries.

## Fall fruiting red **RASPBERRIES**

### **POLANA**

#### **Growth and vegetation**

Good and vigorous stand. Canes of medium height.

#### **Harvest and yield**

Harvest will start right after Pathfinder. Excellent choice

for high-tunnel or any protected type of cultivation.

#### **Berries**

Large size and firm, with a bright shiny red color. Will occasionally bear some double fruits.



### **PATHFINDER**

#### **Growth and vegetation**

Vigorous and stocky, stand with profuse cane production. Short and spiny canes.

#### **Harvest and yield**

Will be the first variety to bear fruits most often in August with excellent yield. Spider mite susceptibility.

Mandatory to protect against late leaf rust (Orange rust) starting in June.

#### **Berries**

Nice pale red and good size berry. Excellent choice for U-pick operations and retail markets.



## Yellow **RASPBERRIES**

### **ANNE**

#### **Growth and vegetation**

Upright and vigorous canes, light green foliage on a spiny cane.

#### **Harvest and yields**

Harvest will start after Polana, Good yield.

#### **Berries**

Unique flavor and very good size and firmness. Attractive berries will turn golden when fully ripen.





Available

**RASPBERRY** VARIETY LINES

Period	Variety	Origin	Hardiness	Productivity	Size	Flavor	Firmness	Appreciation	TYPE OF MARKET				TYPE OF PLANTS	
									Whole-sale	Retail	Pick-your-own	Process.	Bare root	
EARLY	Prélude**	NY	•••••	•••••	•••••	•••••	•••••	Very good yield	■	■	■	■	■	
MID-SEASON	AAC-Eden	MS	•••	•••••	•••••	•••••	•••••	Free of spines fresh market	■	■	■		■	
	Killarney	MB	•••••	•••••	•••••	•••••	•••	Very good yielder	■	■	■		■	
	Nova	NS	•••••	•••••	•••••	•••••	•••••	#1 variety	■	■	■	■	■	
	Sk Red Bounty	MB	•••••	•••••	•••••	•••••	•••••	Very hardy	■	■		■	■	
LATE	Sk Red Mammoth	MB	•••••	•••••	•••••	•••	•••••	Spread harvest		■	■			■
	Tulameen	BC	••	•••••	•••••	•••••	•••••	High tunnel production	■	■				■
FALL FRUITING	Autumn Britten**	UK	•••••	•••••	•••••	•••	•••••	Dark fruit	■	■				■
	Caroline**	MD	•••••	•••••	•••••	•••••	•••••	Root disease tolerance		■				■
	Heritage	NY	•••••	•••••	•••	•••••	•••••	High tunnel production		■		■		■
	Joan J**	UK	•••••	•••	•••••	•••••	•••••	Exceptional flavor		■				■
	Pathfinder	WY	•••••	•••••	•••	•••••	•••••	The earliest fall bearing	■	■	■			■
	Polana**	PL	•••••	•••••	•••••	•••••	•••••	Productive under protected culture	■	■	■			■
	Polka**	PL	•••••	•••	•••••	•••••	•••••	Crumbly fruit sensitivity	■	■	■			■
YELLOW	Anne	MD	•••••	•••••	•••••	•••••	•••••	Exceptional flavor		■	■			■
PURPLE	Royalty	NY	•••••	•••	•••••	•••	•••••	Flavorfull					■	■
BLACK	Bristol	NY	•••	•••••	•••	•••••	•••	For trial		■				■
	Jewel	NY	•••	•••••	•••••	•••••	•••••	#1 selling variety		■	■			■



Available

**HIGHBUSH BLUEBERRY** VARIETY LINES

Period	Variety	Origin	Hardiness	Productivity	Size	Flavor	Firmness	Appreciation	TYPE OF MARKET				TYPE OF PLANTS	
									Whole-sale	Retail	Pick-your-own	Process.	Pot	Cane
EARLY	Bluetta	NJ	•••••	•••••	•••••	•••••	•••	Earliness and hardiness	■	■	■		■	14m
	Chanticleer	US	•••••	•••••	•••••	•••••	•••	Disease resistance	■	■	■		■	15m
	Duke	NJ	•••	•••••	•••••	•••••	•••••	Open growth and firm fruit	■		■		■	2m
	Polaris	MN	•••••	•••••	•••	•••••	•••	Fast ripening		■	■	■	■	12m
	Reka	NZ	•••••	•••••	•••	•••••	•••	Very vigorous	■	■	■		■	17m
	Spartan	MD	•••	•••••	•••••	•••••	•••••	Exceptional flavor		■	■	■	■	17m
	Sweetheart	US	•••	•••••	•••••	•••••	•••••	Self pollinating	■	■	■	■	■	15m
MID-SEASON	Blueray	NJ	•••	•••••	•••••	•••••	•••••	Easy picking	■	■	■		■	17m
	Chippewa	MN	•••••	•••••	•••	•••••	•••	Uniform fruit size		■	■		■	14m
	Huron	US	•••••	•••••	•••••	•••	•••	Easy picking	■	■	■	■	■	14m
	Northblue	MN	•••••	•••••	•••••	•••••	•••	Excellent hardiness		■	■		■	12m
	Northland	MI	•••••	•••••	••	•••••	•••	Needs heavy pruning		■		■	■	14m
	Patriot	ME	•••••	•••••	•••••	•••	•••	Will tolerate heavy soil			■		■	15m
	Superior	MN	•••••	•••••	•••	•••••	•••••	Upright growth		■	■		■	15m
	Toro	USDA	•••	•••••	•••••	•••••	•••	Very large fruit size		■	■		■	2m
LATE	Bluecrop	NJ	•••••	•••••	•••••	•••••	•••••	High yielder	■	■	■		■	2m
	Bluegold	NJ	•••••	•••••	•••••	•••••	•••••	Compact and productive		■	■		■	12m
	Bonus	MI	•••••	•••••	•••••	•••••	•••••	Extra large fruit size		■	■		■	14m
	Draper	US	•••••	•••••	•••••	•••••	•••••	Upright bush	■	■	■		■	15m



Excellent ••••• Very Good •••• Good ••• Average •• Poor • Protected variety \*\* (Plant breeders right certificate granted)

Varieties best adapted to organic growing

We chose to list varieties in alphabetical order within harvest group, instead of listing them by dates of harvest debut. Harvest dates and debut may change with soil types, localities and climatic variations of each season.



# Highbush **BLUEBERRIES**

## **CHANTICLEER**

VERY LARGE FRUIT SIZE. EARLY AND VERY PRODUCTIVE, EXCELLENT DISEASE RESISTANCE.

### **Growth and vegetation**

Vigorous bush of 1.5M. Upright growth with flowers bearing outside the canopy.

### **Harvest and yield**

Very good yield, late flowering but early harvest.

### **Berries**

Very large fruit size adapted to all harvest methods. Very good disease resistance.



## **DRAPER**

LATE HARVEST WITH LARGE FRUIT SIZE. HIGH YIELD ON YOUNG PLANTS. ADAPTED TO MECHANICAL HARVEST. VERY GOOD FRUIT QUALITY.

### **Growth and vegetation**

Vigorous upright bush of 1.5 m high. High number of branches.

### **Harvest and yield**

Late harvest with a high yield in the early growth years. Very good yield.

### **Berries**

Excellent fruit quality. Large size and easy to reach berries. Adapted to mechanical harvest.



## **HURON**

VERY PRODUCTIVE, MID-SEASON AND LARGE SIZE BERRY. ADAPTED TO MECHANICAL HARVEST.

### **Growth and vegetation**

Upright and vigorous bush of 1.4M. Very good hardiness.

### **Harvest and yield**

Easy to reach mid-season crop. Adapted to mechanical harvest.

### **Berries**

Very large fruit size. Excellent shelf life, color medium blue.



## **SWEETHEART**

SWEET AND FIRM. EARLY AND VERY PRODUCTIVE. EXCELLENT DISEASE RESISTANCE.

### **Growth and vegetation**

Vigorous bush of 1.5M. Hybridized with low bush blueberry parentage.

### **Harvest and yield**

Self pollinating like Patriot. Early and very productive.

### **Berries**

Firm and very sweet. Suits all type of harvesting. Easy to reach fruits.



## **PATRIOT**

### **Growth and vegetation**

Vigorous bush with a spread growth of 1.5 meters tall. The open bush will facilitate trimming and harvesting. Very hardy and well adapted to heavy soil.

### **Harvest and yield**

Late mid-season harvest. Long harvest period well suited for u-pick operations.

### **Berries**

Bears a good flavor, firm and medium blue berry. Size of the berry starts very large and gradually declines with harvesting. Good flavor, needs a long ripening period on the bush before harvest (8 to 12 days).



## **POLARIS**

### **Growth and vegetation**

Upright bush of 1.5m height. Very cold hardy can be planted tighter to increased yield per acre. Low disease incidence.

### **Harvest and yield**

Early crop with fast ripening. Good productivity year after year despite cold winters. Fruit initiation is early in the fall.

### **Berries**

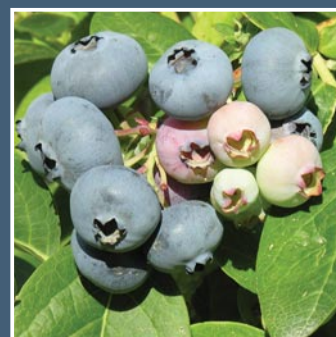
Good size fruit, pale blue with excellent taste and aroma. Taste will develop very rapidly on the bush after full coloration.



**BLUEBERRIES LOWBUSH**  
BRUNSWICK • BLOMIDON

## **SUPERIOR**

is a new variety of highbush blueberry issued like Patriot, from a cross with lowbush blueberries. Bearing medium size fruits, on a 1.5 M bush with an erect growth, Superior is a very hardy mid season variety showing good tolerance to diseases. Superior is a fine addition to your blueberry patch for U-pick or transformation in northern climate. To be discovered.



**VISIT THE  
WEBSITE**

TO FIND OUT  
ABOUT AVAILABLE  
VARIETIES

**lareault.com**



## BLACKBERRIES



### HARDY-BLACK

#### Growth and vegetation

Vigorous plant with low suckering. Will shoot out, long bending thorny canes. Excellent hardiness.

#### Harvest and yield

Early and abundant yield.

Must be winter protected in colder region.

#### Berries

Larger size than wild blackberries. Excellent taste.



[lareault.com](http://lareault.com)

**Hardy Black** like the name says, this is a Hardy blackberry that bears fruit early on thorny long canes. Similar to its wild counterparts, berries are larger and better suited to free picking. It will perform better in our winters but may need winter protection in Zone 4 and colder.

### Available BLACKBERRY VARIETY LINES

Period	Variety	Origin	Hardiness	Productivity	Size	Flavor	Firmness	Appreciation	TYPE OF MARKET				TYPE OF PLANTS
									Whole-sale	Retail	Pick-your-own	Process.	
	Chester	IL	...	...	....	...	....	Thornless		■			■
	Hardy Black	ON	....	...	...	....	...	Hardiness		■	■		■
	Perron noir	QC	...	...	....	...	....	Thornless		■			■

Excellent ..... Very Good ..... Good .... Average .. Poor • Protected variety \*\* (Plant breeders right certificate granted)

## CHERRIES



### CARMINE JEWEL

#### Growth and vegetation

Very vigorous with a low sucker production. Orchard easy to maintain and establish.

#### Harvest and yield

Early harvest with good productivity. Will bear fruits very quickly after establishment.

#### Berries

Small pit and lots of flesh. Fruit and flesh are both dark red. Average fruit weight of 3.5 gr. Will accommodate evenly fresh market and transformation.

**Dwarf cherries** introduced by the University of Saskatchewan are small trees with maximum height of 2.5 m and yields that can reach from 10 to 15 Kg of fruit per tree. These plants are extremely hardy and can withstand temperature as low as -40°C. (Zone 2b). Fruits are of superior quality than those of traditional hardy cherry trees (Prunus cerasus) such as the Evans and Montmorency varieties. Fruits are also bigger and sweeter. Picking season starts in July, lifespan of the stand can be of 20-25 years. Plants are self-pollinating (Bees preferred). Plants must be protected from dominant winds. A pH of 6.5 and more is ideal in a light soil, but other conditions are tolerated. Pruning can be done in the spring after the 5th year of growth. Never prune more than 20% of the bush canopy volume. Deers, squirrels, birds and caterpillars are among their natural enemies.

### Available CHERRY AND DWARF CHERRIES VARIETY LINES

Period	Variety	Origin	Hardiness	Productivity	Size	Flavor	Firmness	Appreciation	TYPE OF MARKET				TYPE OF PLANTS
									Whole-sale	Retail	Pick-your-own	Process.	
EARLY	Carmine Jewel**	SK	....	....	...	...	....	Produce few suckers	■			■	■
	Juliet**	SK	....	..	...	....	....	Medium vigor	■	■	■		■
MID-SEASON	Crimson Passion**	SK	....	...	....	....	...	Easy pit removal	■	■	■		■
	Valentine**	SK	....	....	...	...	..	High yielder	■		■	■	■
LATE	Cupid**	SK	....	..	....	...	....	Produce few suckers		■	■		■
	Romeo**	SK	....	....	...	...	....	Very productive		■	■	■	■

Excellent ..... Very Good ..... Good .... Average .. Poor • Protected variety \*\* (Plant breeders right certificate granted)



# HASKAPS

## AURORA

### Growth and vegetation

Vigorous bush of 1,3 à 1,7 M. Upright and spreaded. Good resistance to mildew.

### Harvest and yield

Excellent yield. Will pollinate other varieties of University of Saskatchewan. Ease of picking.

### Berries

Shape is like a stretched pear. Size average is 1,9 gr. Ideal for gardens and free picking.



## BOREAL BEAST

### Growth and vegetation

Vigorous bush with an upright growth, stems are sturdier than other know varieties with an increase mildew tolerance.

### Harvest and yield

Late variety with very good productivity suited for mechanical harvesting.

### Berries

Increase fruit size when compared to Tundra and the Indigo series. Off the scale flavour and aroma . Berries stay attached to the stems for a prolong period and ease the mechanical harvesting.

## BOREAL BEAUTY

### Growth and vegetation

Upright growth and very vigorous bush, sturdier stems than other known varieties. Excellent resistance to mildew.

### Harvest and yield

The latest variety with excellent productivity, very good for mechanical harvesting.

### Berries

Excellent berry size, larger to the Indigo series and Tundra. Firm and thick fruit with oval shape. Berries will remain attached to the stems and ease mechanical harvest.

LARGE FRUIT SIZE  
EXCELLENT FLAVOR  
VERY PRODUCTIVE  
VERY LATE SEASON  
VERY PROMISING

## BOREAL BLIZZARD

NEW HASKAP

### Growth and vegetation

Very vigorous upright bush. Increase growth rate compared to the indigo series.

### Harvest and yield

Mid-season to late harvest, a week later than Tundra. Excellent yield.

### Berries

Fruit weight from 3 to 4 gr. Good firmness and excellent flavor.



Available

**HASKAP** VARIETY LINES

Period	Variety	Origin	Hardiness	Productivity	Size	Flavor	Firmness	Appreciation	TYPE OF MARKET				TYPE OF PLANTS	
									Whole-sale	Retail	Pick-your-own	Process.	Pot	Height
EARLY	Berry Blue	RU	.....	...	...	...	...	Excellent pollinator	■			■	■	2.0m
	Blue Belle	RU	.....	...	...	...	...	Excellent pollinator	■			■	■	1.25m
MID-SEASON	Aurora**	SK	.....	.....	.....	.....	...	Commercial production	■	■	■	■	■	1.7m
	Boréalis**	SK	.....	.....	.....	.....	...	Home gardening		■	■	■	■	1.5m
	Indigo Gem**	SK	.....	.....	.....	...	...	Commercial production	■	■	■	■	■	1.5m
	Indigo Treat**	SK	.....	.....	.....	...	...	Commercial production	■	■	■	■	■	1.5m
	Tundra**	SK	.....	.....	.....	.....	.....	Commercial production	■	■	■	■	■	1.5m
LATE	Boreal Beast	CDN	.....	.....	.....	.....	...	Excellent for mechanical harvest	■	■	■	■	■	1.5m
	Boreal Beauty	CDN	.....	.....	.....	.....	...	Very late and large berry size	■	■	■	■	■	1.5m
	Boreal Blizzard	CDN	.....	.....	.....	.....	.....	Very late	■	■	■	■	■	1.5m

Excellent ..... Very Good ..... Good .... Average .. Poor • Protected variety \*\* (Plant breeders right certificate granted)

**VISIT THE WEBSITE**

TO FIND OUT ABOUT AVAILABLE VARIETIES

**lareault.com**

## RHUBARB • GOOSEBERRIES • CURRANTS





## Why choose crowns?

- SHORTER GROWTH PERIOD BEFORE HARVEST.
- MINIMIZE STRESS AT PLANTING.
- IMPROVED VIGOR GETTING OUT OF DORMANCY.
- ROOTS AND CROWNS LOADED WITH CARBOHYDRATES.

## ASPARAGUS



**Roots are sowed with a precision seeder in a sterilized soil.**

### MILLENIUM

#### Growth and vegetation

Very good hardiness and productivity. Will exhibit rust susceptibility under favorable conditions.

#### Harvest and yield

Excellent yield sustained year after year.

#### Spears

One of the best rated spears on the market. Spears will stay tight long after emerging. Even under hot conditions spears quality does not decline.



### ECLIPSE NEW ASPARAGUS

#### Growth and vegetation

Excellent hardiness and vigour selected for its foliar disease resistance and longevity of years of harvests.

#### Harvest and yield

Have showed equal or higher marketable yield than Guelph Millenium as well as an increase longevity of years of harvests.

#### Spears

Long, smooth spears with tight tips and uniform spear diameter. Like Millenium, spears stay tight long after emergence..

### EQUINOX NEW ASPARAGUS

#### Growth and vegetation

Excellent vigor and excellent hardiness. Well adapted to a wide rang of sol types. Will tolerate better replant situation than other varieties.

#### Harvest and yield

Potentially the highest yielder on the market. Early to mid-season harvest.

#### Spears

Medium size, straight and uniform spears. They will remain tight long after emergence, even under warm conditions..



## HARDY KIWI

### ISSAI

*A superfruit loaded with antioxidants*

#### Growth and Vegetation

Compact growth; foliage will need trellising. Hardy and vigorous, minimal pruning needed. Good tolerance to diseases and changing climatic conditions.

#### Productivity

One plant can bear many kilograms of fruit, highly productive. Harvest will take place in late summer and early fall.

#### Berries

Fruit size equivalent to a large table grape, smooth-skinned and sweet berries that can be harvested easily. Self-fertile plant with perfumed flowers, yield will benefit from a second plant pollination.

ONLINE  
INTERACTIVE  
ORDER  
FORM

[lareault.com](http://lareault.com)







TO JOIN US

**PRODUCTION LAREAULT INC.**  
90, Lareault st., P.O. Box. 96,  
Lavaltrie Qc J5T 4A9

Phone : 450 586-1850  
Fax : 450 586-1051  
Email : info@lareault.com

**lareault.com**



**DELIVERY  
ANYWHERE  
IN CANADA**



**ORDERS ACCEPTED**  
ON LINE : [www.lareault.com](http://www.lareault.com)  
EMAIL : [info@lareault.com](mailto:info@lareault.com)  
PHONE : 450 586-1850

## PLANTING TABLE

ROW SPACING	PLANT SPACING	PLANTS PER 30 M / 100 FT ROW	PLANTS PER ACRE	PLANTS PER HECTARE
<b>STRAWBERRY</b>				
0.91 m / 3'	30 cm / 12"	100	13,800	35,000
1.20 m / 4'	30 cm / 12"	100	10,500	26,000
0.91 m / 3'	40 cm / 16"	75	11,100	27,750
1.20 m / 4'	40 cm / 16"	75	8,500	21,000
1.50 m / 5'	40 cm / 16"	75	6,700	17,000
<b>twin rows</b>				
1.20 m / 4'	30 cm / 12"	200	22,470	55,530
<b>RASPBERRY</b>				
1.80 m / 6'	30 cm / 12"	100	7,400	18,500
2.35 m / 8'	30 cm / 12"	100	5,400	13,600
3.05 m / 10'	30 cm / 12"	100	4,400	11,000
<b>black raspberry</b>				
2.35 m / 8'	90 cm / 36"	33	4,560	18,500
<b>BLACKBERRY</b>				
1.80 m / 6'	2.1 m / 7'	14	1,050	2,595
2.35 m / 8'	2.3 m / 8'	12	800	1,975
3.05 m / 10'	2.7 m / 9'	11	650	1,605
<b>HIGHBUSH BLUEBERRY, CURRANTS &amp; GOOSEBERRY</b>				
1.80 m / 6'	1.20 m / 4'	25	1,780	4,360
2.10 m / 7'	1.50 m / 5'	20	1,180	2,890
2.35 m / 8'	1.20 m / 4'	25	1,350	3,430
3.05 m / 10'	1.50 m / 5'	20	1,060	2,610
<b>LOWBUSH BLUEBERRY</b>				
1.5 m / 5'	30 cm / 12"	100	8,712	21,605
<b>ASPARAGUS</b>				
1.2 m / 4'	30 cm / 12"	100	11,235	27,860
1.5 m / 5'	30 cm / 12"	100	8,712	21,605
<b>twin rows</b>				
3.05 m / 10'	30 cm / 12"	200	8,712	21,065
<b>CHERRY, KIWI</b>				
4 m / 13'	1.5 m / 5'	20	670	1,650
<b>HASKAP, RHUBARB</b>				
2 m / 7'	1 m / 3'	30	2,000	4,950
<b>HECTARE</b>		<b>ACRE</b>	<b>ARPENT</b>	
10,000 m <sup>2</sup>		43,264 sq ft	36,864 sq ft	

## HARVEST PERIOD TABLES

CROP	MAY	JUNE	JULY	AUGUST	SEPTEMBER	OCTOBER
SUMMER STRAWBERRY	●	●	●	●		
FALL FRUITING		●	●	●	●	●
SUMMER RASPBERRY			●			
FALL FRUITING			●	●	●	●
BLACKBERRY			●	●	●	
BLUEBERRY			●	●	●	
CHERRY			●	●		
HASKAP	●	●	●			
ASPARAGUS	●	●				
KIWI				●	●	
RHUBARB	●	●				
CURRENT			●	●		
GOOSEBERRY			●	●		